



MADE IN QATAR

A Member of



BACK DRAFT DAMPER



CAT DUCT PRODUCTS ARE WIDELY APPROVED AND USED IN QATAR INCLUDING PROJECTS FOR KAHRAMAA, ASHGHAL, PEARL QATAR ETC.

CAT DUCT PRODUCT RANGE

- GI Rectangular Ducting
- GI Spiral Ducting
- Aluminum Ducting
- Stainless Steel Ducting
- Black Steel Ducting
- Fire Rated Ducting
- Rectangular Volume Control Dampers (GI & SS)
- Round Volume Control Dampers (GI, SS & AL)
- Fire Dampers
- Air Filters
- Access Doors
- VAV
- Sound Attenuators
- Back Draft Dampers
- Metal Cladding (AL & SS)
- Fresh Air Intake Assembly
- S.S. Kitchen Equipments

ORDERING EXAMPLE

■ To select non-return dampers duct mounted for a duct opening of 900 x 500mm of quantity 50 Nos

Fixing details

Bolting

Order as

CNRD-D-900 x 500-50-A

■ To select non-return dampers wall mounted for a wall opening of 500 x 400mm of quantity 100 Nos

Fixing details

Screw fixing

Order as

CNRD-W-500 x 400-100-B

PRESSURE RELIEF DAMPER

Model: PRD-H-F, PRD-H-D

Construction

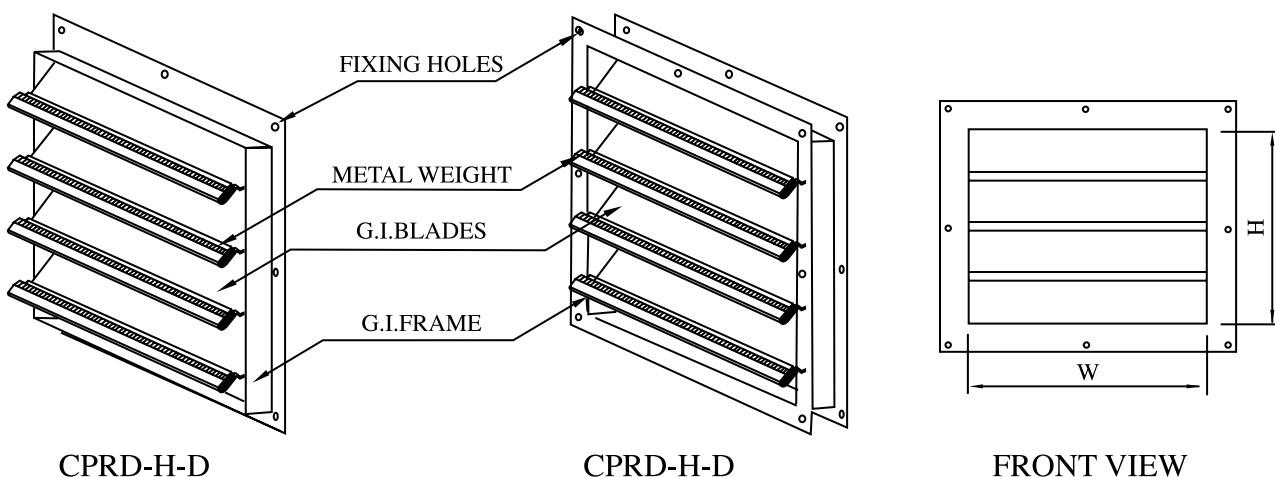
- Frame: Galvanized steel frame with powder coated finish
- Blades: Galvanized steel blades with powder coated finish
- Blade supports: Blade shafts are stainless steel and supported with brass bushes
- Blade seals: Foam gasket for air tightness

Description

- The pressure relief dampers are provided with weighed metal strips
- The dampers are tested after fabrication to operate at required pressure
- The dampers are designed to maintain a constant pressure level inside pressurized rooms by relieving excess air when it exceeds the desired limit

Standard Finishes

- Powder coated as per RAL colour codes



NON-RETURN DAMPER

WALL MOUNTED

Model: NRD-W

Construction

FRAME

High quality extruded aluminium profile with 30mm flange width as standard. 12,16,24mm flange widths are optional.

BLADES

Aluminium sheet as standard. GI sheet as option.

BLADE SUPPORTS

Self-oiling nylon bushings with 8mm diameter aluminium rods.

BLADE SEALS

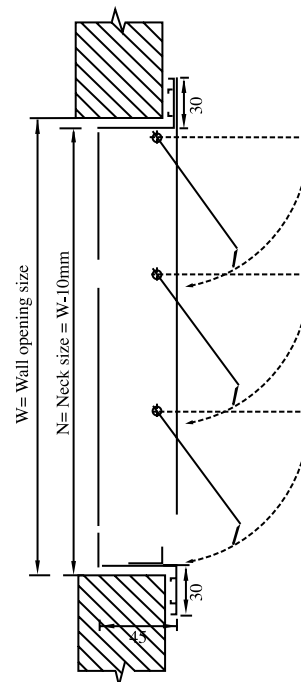
foam gasket for air tightness.

BLADE STOPPER

20 mm x 20 mm aluminium angle.

Description

- Frame is of high quality extruded aluminium profiled construction with the advantages of corrosion resistance and rigidity
- Air operated damper blades are fixed to the frame by self-oiling nylon bushes with 8mm dia. aluminium pipes
- Blades are sealed with foam gasket at the bottom to avoid noise and to provide air tight operation
- Blades open fully or to any angle depending on the air velocity without fluctuating when there is constant airflow. Blades close quietly when the air flow stops
- Designed to maintain a constant pressure level inside pressurized rooms by relieving excess air when it exceeds the desired limit
- Generally installed on diesel generator plant rooms ventilation system and exhaust ducting
Available in square and rectangular sizes



NON-RETURN DAMPER

DUCT MOUNTED

Model: NRD-D

Construction

FRAME

High quality galvanized steel sheet.

FRAME SIZE

125mm depth and standard flange height of 25mm.

BLADES

Aluminium sheet as standard. GI sheet as option.

BLADE SUPPORTS

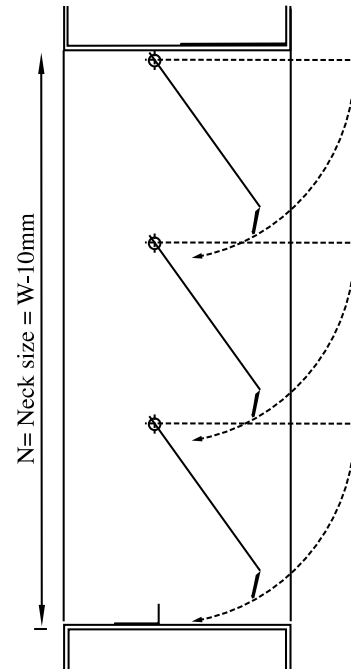
Self-oiling nylon bushings with 8mm diameter aluminium rods.

BLADE SEALS

20mm x 20mm aluminium angle.

Description

- Frame is constructed from galvanized steel sheet. Welded joints are protected by aluminium spray coating
- Air operated damper blades are fixed to the frame by self oiling nylon bushes with 8mm dia. aluminium pipes
- Blades are sealed with foam gasket at the bottom to avoid rattling noise and to provide air tight operation
- Blades open fully or to any angle depending on the airvelocity. Blades stay in position of opening without fluctuating when there is constant air flow. Blades close quietly when the airflow stops
- Designed to maintain a constant pressure level inside pressurized rooms. Used at duct outlets to prevent back draft when air moving devices are switched off
- In a multi-fan installation non-return dampers prevent back draft through the operating fans
- Structure is available with flanged edges and are supplied undrilled as standard
- Available in square and rectangular sizes



Standard finishes

- Natural anodized aluminium finish
- Powder-coated colour finish as per RAL colour codes
- Flexibility of finishing is available as option

Standard sizes

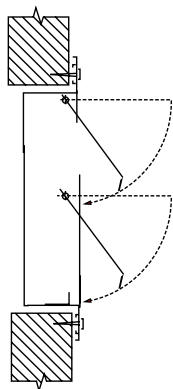
- Sizes available from 100mm x 100mm with an increment of 50mm

- Available in square and rectangular sizes
- Non-standard sizes available as option

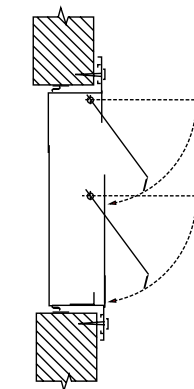
Fixing details

Model: CNRD-W

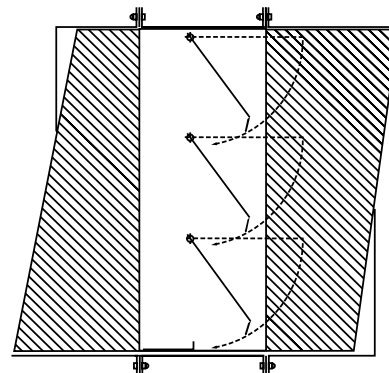
Model: CNRD-D



Screw fixing



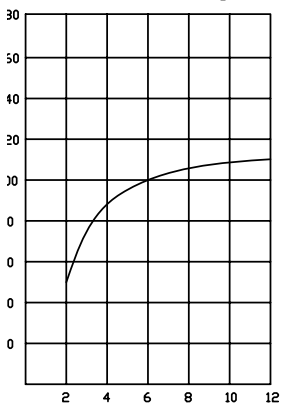
Concealed fixing



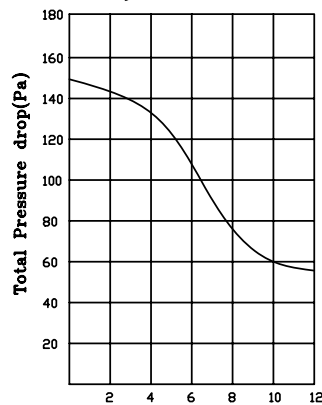
Fixing by bolts

PERFORMANCE DATA

1. Pressure drop Vs Air velocity



Air Velocity (m/sec)
Damper installed in horizontal ductwork



Air Velocity (m/sec)
Damper installed in vertical ductwork

HOW TO ORDER

Model	Mounting details	Size	Quantity	Fixing
CNRD	W = Wall mounted	Specify duct / wall opening size width x height in mm x mm	Specify in numbers	A = Fixing by bolts.
	D = Duct mounted			B = Screw fixing.
				C = Concealed fixing.



CAT HVAC DUCT Manufacturing Division
• Unit 1, Street No. 37 | Unit 2, Street No. 40 | Unit 3, Street No. 34,
Salwa Industrial Area Tel: (+974) 460-7292 Fax: (+974) 460-7731
Email: catduct@qatar.net.qa Website: www.aac.com.qa